

CHILLERS IN STOCK FOR HIRE OR PURCHASE

We have a wide range of industrial cooling equipment at F&R Products Ltd available for hire or purchase.

Typical selection shown below:-

NEW

Hyfra SIGMA 13-Special
12.6kW cooling water to 20°C in
32°C ambient, 21.6 l/min @ 5 bar



NEW

Hyfra eCHILLY 1
7.75kW cooling water to 15°C in 32°C ambient



NEW

Hyfra eCHILLY+ 2
1.29kW cooling water to 15°C in 32°C ambient



NEW

Hyfra eCHILLY+ 3
2.45kW cooling water to 15°C in 32°C ambient



NEW

Hyfra eCHILLY+ 4
3.56kW cooling water to 15°C in 32°C ambient



NEW

Hyfra eCHILLY 5
4.52kW cooling water to 15°C in 32°C ambient



NEW

Hyfra SIGMA 16-Special
12.7kW cooling water to 15°C in
an ambient of 32°C



CWK30-AC, refurbished
(serial number W11840)
0.8kW cooling 4 l/min from
17.7°C to 14.8°C in a 21°C
ambient



Hyfra GAMMA 42-O-W-S,
refurbished
(serial number W11873)
33.88kW cooling water from 19.7°C
to 28.3°C in an ambient of 24°C



Hyfra eCHILLY 2-S,
refurbished
(serial number W11867)
1.53kW cooling water 21°C to
15.5°C in ambient 34°C,
4 l/min @ 2.8 bar



Hyfra ALPHA 13-E-W-S,
refurbished
(serial number W11871)
12.9kW cooling water to 16.7°C
in an ambient of 25°C



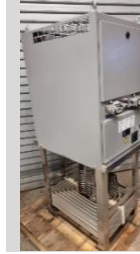
eCHILLY 2-S, refurbished
(serial number W11867)
1.53kW cooling water to
15.2°C in an ambient of 32°C



CHILLY 15-S-HHK-0.9,
refurbished

(serial number W11857)

**1.58kW cooling 0.12m³/hr water
to 20.5°C in a 16°C ambient**



TRK70-OF-S, refurbished

(serial number W11859)

**9.3kW cooling water to 19.6°C
in an ambient of 24°C**

GAMMA 13-O, refurbished

(serial number W11903)

**12.7kW cooling water to 20°C
in an ambient of 23°C**



VWK21-S, refurbished

(serial number W11328)

**2.0kW cooling water from
20°C to 15°C in 15°C ambient**

VWK31-1-S, refurbished

(serial number W11828)

**5.96kW cooling water from 30°C
to 24.3°C in a 30°C ambient**



ALPHA 18-E, refurbished

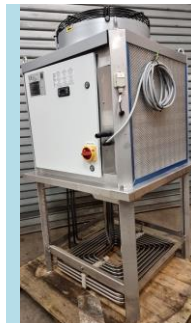
(serial number W11837)

**12.43kW cooling water to
20.3°C
in an ambient of 27°C**

ALPHA 22-E-S, refurbished

(serial number W11782)

**21.7kW cooling water from
30°C to 19°C in 32°C ambient**



GAMMA 13-E-S,
refurbished

(serial number W11784)

**11.9kW cooling water to
15°C in 32°C ambient**

GAMMA 28-O-S, refurbished

(serial number W11791)

**29.7kW cooling water from 32°C
to 22°C in 33°C ambient
40 l/min @ 3.9 bar**



VWK90-DE-S, refurbished

(serial number W11896)

**11.3kW cooling water to
19.5°C in a 32°C ambient**

Alpha 9-E-S, refurbished

(serial number W11816)

**9kW cooling water to 18°C
in an ambient of 23°C**



CWK110-S, refurbished

(serial number W11630)

**11.24kW @ 15.5°C in
an ambient of 28°C**

WT12-S, refurbished

(serial number W11898)

12kW when cooling water to **27.2°C** in an ambient of **21°C**



TRK-CHILLY-35-OEF-S, refurbished

(serial number W11810)

3kW cooling water to **15.1°C** in a **22°C** ambient



TRK-CHILLY-25-OEF-S, refurbished

(serial number W11813)

3kW cooling water to **15°C** in an ambient of **36°C**



CHILLY 15-S, refurbished

(serial number W11826)

1.26kW cooling water to **20.7°C** in an ambient of **30°C**



ALPHA 16-E-S, refurbished

(serial number W11934)

14.9kW cooling water to **18.9°C** in an ambient of **27°C**



ALPHA 13-E-S, refurbished

(serial number W11897)

12.1kW cooling **3.5m³/hr** of water @ **1.6 bar** to **17.4°C** in an ambient of **31°C**



SIGMA 9-W-S, refurbished

(serial number W11858)

7.84kW cooling water to **22.2°C** in an ambient of **30°C**



VWK110/1-S, refurbished

(serial number W11914)

12kW cooling **3m³/hr** of water @ **1.9 bar** to **10°C** in an ambient of **18°C**



PLUS MANY MORE!

Contact our Technical Sales Team who can assist with selection, prices, bespoke specifications and further information on 01823 663281 or sales@fandrproducts.co.uk